

When installing casing on RediFrame and RediFlex frames, the supplied clips are designed to snap in place into both ends of the header casing (fig 1). After installed, the clips help ensure the proper alignment of the miter between the header casing and jamb casing on our steel, aluminum and S56 colonial casing.

Our competition uses the same style clip that is crimped into the casing to hold it in place on the jamb casing (fig 2).

The overall design of both clips is the same with the difference in how the clip is secured. RediFrame and RediFlex frames are designed with a positive casing and clip system to make sure the casing is securely fastened (fig 3).

The RediFrame system does not require crimping to hold the clip in place. The combination of the casing, frame lance and clip design also makes sure the casing does not rattle during the operation of the door.



Figure 1

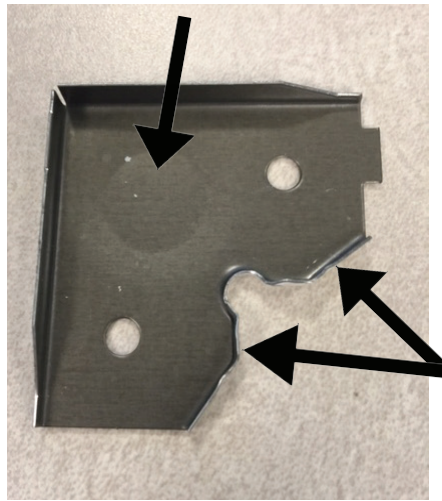


Figure 2

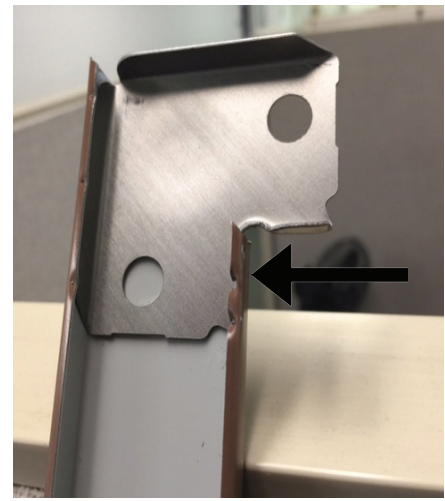


Figure 3



**THE
DUNBARTON
GROUP**
Your Complete Opening Solution

1101 Technology Drive | Dothan, Alabama 36303
800.633.7553 | 334.794.9184 fax
www.dunbarton.com | sales@dunbarton.com